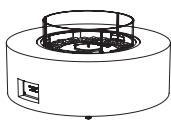


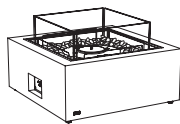
CLEARANCES & INSTALLATION MANUAL BIOETHANOL ONLY

Please read these instructions and the Burner Operations Manual provided with your burner completely before operating the appliance.

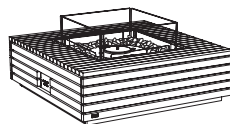
REFER TO THE OPERATIONS MANUAL IN THE BURNER PACKAGING FOR CLEARANCE AND INSTALLATION INSTRUCTIONS IF USING PROPANE OR NATURAL GAS.



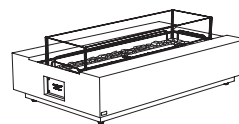
Ark 40
Concrete 68kg, 149.7lbs



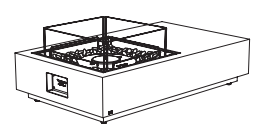
Base 30
Concrete 62.1kg, 136.7lbs
Teak 43.8kg, 96.4lbs



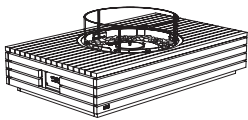
Base 40
Concrete 79.4kg, 174.7lbs
Teak 56.8kg, 125lbs



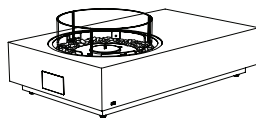
Cosmo 50
Concrete 76.3kg, 167.9lbs
Teak 58.8kg, 129.4lbs



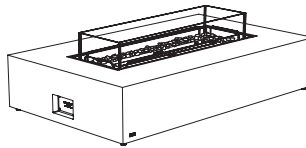
Manhattan 50
Concrete 58.4kg, 128.5lbs
Teak 52.8kg, 116.2lbs



Martini 50
Concrete 54.6kg, 120.1lbs
Teak 47.2kg, 103.9lbs



Tequila 50
Concrete 54.6kg, 120.1lbs



Wharf 65
Concrete 118.3kg, 260.3lbs
Teak 87.3kg, 192.1lbs

e-nrg[®]
natural. renewable. green.

e-NRG is the ONLY fuel to
be used in this appliance.

www.e-nrg.com
www.e-nrg.com.au

! WARNINGS:

IF THE INFORMATION IN THIS MANUAL IS NOT FOLLOWED EXACTLY, A FIRE OR EXPLOSION MAY RESULT CAUSING PROPERTY DAMAGE, PERSONAL INJURY OR LOSS OF LIFE.



Do not fill
while hot



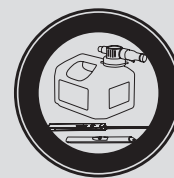
Do not fill while
operating



Do not overfill



Flammable



Use with supplied
accessories



Keep away
from children

Fireplace Clearances

When using Bioethanol as a fuel source this model is suitable for indoor and outdoor use.

Not intended for table-top use where frequent relocation is required.

Before installation ensure that the model is positioned in accordance with the compulsory minimum clearances outlined below.

If used indoors ensure that you pay attention to the Minimum Room Sizes below:

AB8/ AB8(EN)	116m ³ [4096ft ³] per burner
XL900	110m ³ [3884ft ³] per burner

WARNING: Ensure that your fire is positioned away from flammable materials and other sources of ignition at all times. Pay very close attention to positioning the fire away from items that may move as a result of wind and drafts. For example trees/branches/paper and the like.

The base of the burner within the model must never come into direct contact with flammable materials.

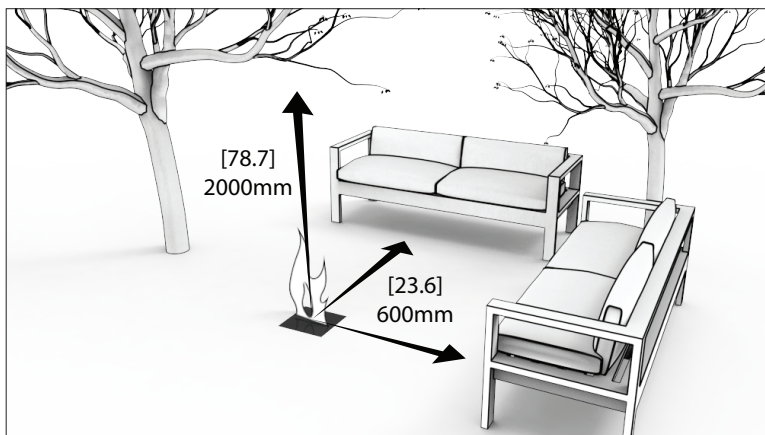
Side clearances to fixed and stable furniture items that are not susceptible to movement (e.g lounges or patio furniture) must remain a minimum of 600mm [23.6in] away from the flame at all times.

Overhead clearances to items that are susceptible to movement (e.g. Trees) must remain a minimum of 2000mm [78.7in] away from the flame at all times.

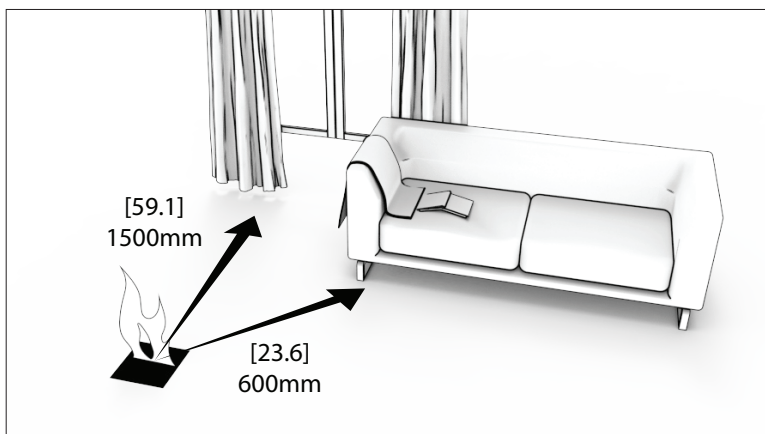
These products feature 360° height-adjustable articulating feet. Adjust the feet by turning them in either direction until you achieve a perfectly level and stable model before operating.

Stainless steel will rust or corrode over time if contamination or debris is not cleaned or removed immediately. Always use the Burner Lid included with your model to avoid dust and debris from accumulating inside the burner.

If you live in extreme weather conditions where accumulation of snow is likely, use of the Winter Bag is imperative in order to be covered by the warranty.



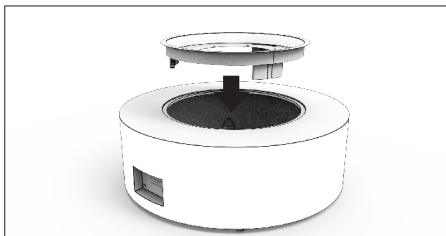
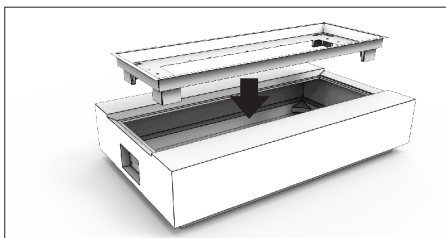
1. Outdoor Clearances



2. Indoor Clearances

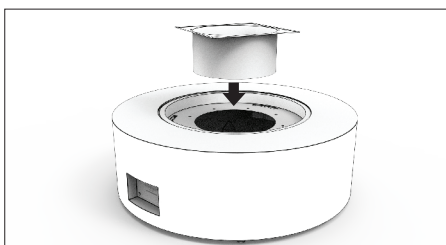
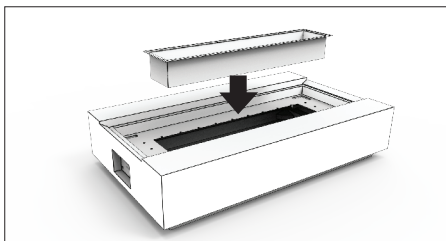
Fireplace Installation

1. Insert the metal tray into the base.

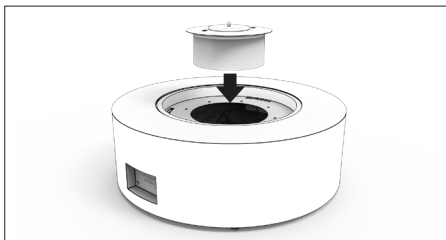
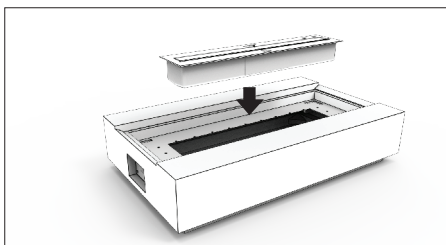


2. For Indoor Installations insert the Indoor Safety Tray. The appliance must not be operated indoors without the Safety Tray installed.

For outdoor installation go to Step 3.

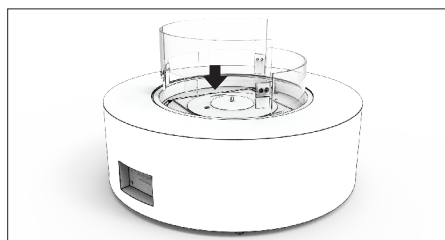
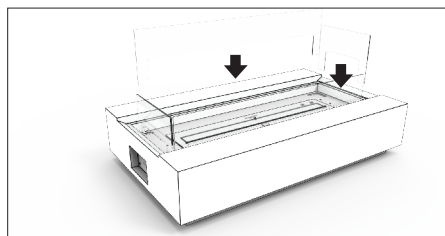


3. Insert Burner into metal tray.



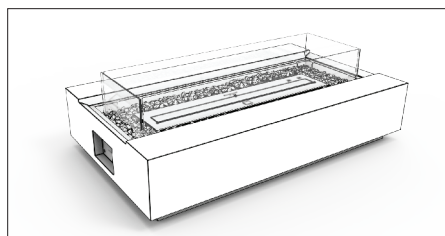
4. Insert Glass Screen (If applicable). Refer to instructions in glass screen packaging.

Appliance must not be operated without the glass screen installed.



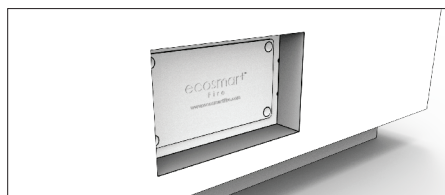
5. Add glass charcoal around the burner - be careful not to scratch the burner surface.

Do not place glass charcoal on top of the burner or where they can interfere with the operation of the burner or the flame.

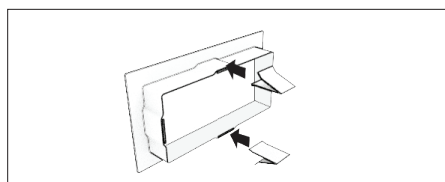


6. For models that have a fixed cosmetic plate pre-installed please proceed to Step 10.

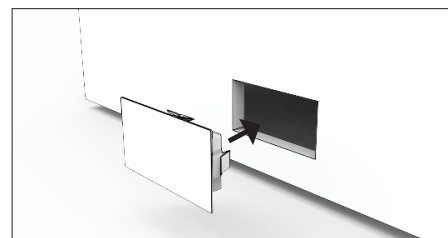
Otherwise please move to Step 7.



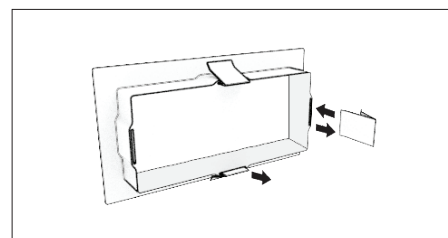
7. Insert two clips into the top and bottom of the control panel. (Four clips are supplied but only one or two will be needed in most cases).



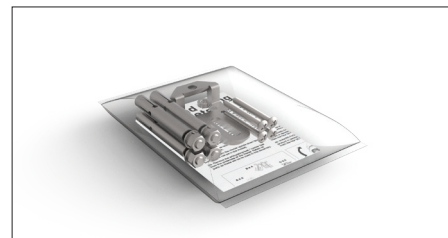
8. Insert the cosmetic cap into position.



9. If you find it too loose - add an additional clip to the side/s to tighten up the fit, if it's too tight - remove one of the clips until the best fit is achieved. The remaining part (similar to the cosmetic plate) packed with your unit is not required for bioethanol fuelled installations.



10. These models come with Ground Fixing Brackets so they can be installed in a fixed position. Follow the instructions supplied with the Ground Fixing Brackets to complete the installation of the product.



OPERATE ACCORDING TO THE BURNER OPERATIONS MANUAL INCLUDED WITH THE BURNER.



MAD Design Group

Showrooms 3 & 4, 40-42 O'Riordan Street

Alexandria NSW 2015 Australia

Tel: +61 2 9997 3050 Email: info@maddesigngroup.com

REV1119
